

ATTENTION!

ST. JOHNS COUNTY RESIDENTS

Tillman Ridge Landfill

3005 Allen Nease Rd. Elkton FL (904) 824-9720

& Stratton Rd. Transfer Station

250 North Stratton Rd, St. Augustine, Florida 32095

Are open for your convenience

Saturday 7a.m. to 1p.m.

Monday - Friday 7a.m. to 6p.m.

Accepting at no charge, all household waste, chemicals, batteries & white goods. There is a charge for tires and pressure-treated wood.

ITEMS ACCEPTED FOR RECYCLING

- Plastic Bottles & Jugs Labeled #1 - #7
- Empty Pill Bottles
- Water Bottles
- Green, Brown And Clear Glass Bottles
- Metal And Aluminum Cans
- Cereal Boxes (With Inserts Discarded)
- Newspapers & Inserts
- Junk Mail
- Magazines
- Milk Cartons, Juice Boxes, etc.
- Catalogs
- Telephone Books
- Brown Paper Bags
- Office & Copy Paper
- File Folders
- File or Packing Boxes
- Brown or Gray Fiber Packages
- Corrugated Cardboard (Cut into 2x3 Sheets)
- Shredded Paper in a Closed Paper Bag



Not collecting plastic bags, motor oil containers, pool chemical bottles, pesticide or fertilizer bottles, and loose shredded paper. **Thanks!**



For more information, please contact us at (904) 827-6980. To learn more about the many services we offer, please visit us at: www.sjcfi.us/SolidWaste

St. Johns County Solid Waste Management | We're here to better serve our citizens.

Directions available at the office.

Directions from Harbour Vista Cir to 3005 Alan Nease Rd



○ Harbour Vista Cir

St Augustine, FL 32080



 This route has restricted usage or private roads.

Follow **Harbour Vista Cir** and **Plantation Island Dr S** to **FL-312 W**


0.6 mi / 2 min

 1. Head **east** on **Harbour Vista Cir** toward **Plantation Island Dr S**
 Restricted usage road

0.2 mi

 2. Take the 2nd **right** onto **Plantation Island Dr S**
 Restricted usage road

0.1 mi

 3. Turn **left** to stay on **Plantation Island Dr S**

0.3 mi

 4. Take the 1st **right** to stay on **Plantation Island Dr S**

449 ft

Take **FL-207 S** to **Vermont Blvd**

8.0 mi / 12 min

 5. Take the 1st **left** onto **FL-312 W**

2.6 mi

 6. Turn **left** onto **FL-207 S**



5.5 mi

Continue on **Vermont Blvd**. Drive to **Alan Nease Rd**

0.8 mi / 2 min

 7. Turn **right** onto **Vermont Blvd**

0.7 mi

 8. Continue onto **Alan Nease Rd**
 Destination will be on the left

0.1 mi

⊙ 3005 Alan Nease Rd

Elkton, FL 32033

These directions are for planning purposes only. You may find that construction projects, traffic, weather, or other events may cause conditions to differ from the map results, and you should plan your route accordingly. You must obey all signs or notices regarding your route.

Directions from Harbour Vista Cir to St. Johns County Animal Control

○ Harbour Vista Cir

St Augustine, FL 32080

⚠ This route has restricted usage or private roads.

Follow Plantation Island Dr S and FL-312 W to U.S. 1 N

2.2 mi / 4 min

↑ 1. Head east on Harbour Vista Cir toward Plantation Island Dr S

⚠ Restricted usage road

0.2 mi

↗ 2. Take the 2nd right onto Plantation Island Dr S

⚠ Restricted usage road

0.1 mi

↶ 3. Turn left to stay on Plantation Island Dr S

0.3 mi

↗ 4. Take the 1st right to stay on Plantation Island Dr S

449 ft

↶ 5. Take the 1st left onto FL-312 W

1.6 mi

Turn right onto U.S. 1 N



14.2 mi / 18 min

Drive to N Stratton Rd

0.2 mi / 2 min

↶ 7. Turn left onto Pine Island Rd

200 ft

↗ 8. Slight right onto N Stratton Rd

0.1 mi

↗ 9. Take the 1st right to stay on N Stratton Rd

📍 Destination will be on the right

180 ft

⊙ St. Johns County Animal Control

130 N Stratton Rd, St Augustine, FL 32095

These directions are for planning purposes only. You may find that construction projects, traffic, weather, or other events may cause conditions to differ from the map results, and you should plan your route accordingly. You must obey all signs or notices regarding your route.

St. Johns County Government

Drop Off Locations

Transfer Stations

All household garbage, hazardous waste, and white goods may be brought to either of the St. Johns County Transfer Stations for disposal during operating hours. (Recyclables only accepted at Tillman Ridge.)

Tillman Ridge Transfer Station

3005 Allen Nease Rd

Elkton, Florida 32033

Stratton Rd Transfer Station

250 North Stratton Rd

St. Augustine, Florida 32095

Hours

- Monday - Friday, 7am - 6pm, Saturday, 7am - 1pm
- Closed Thanksgiving, Christmas, and New Years Day.

Items Accepted

- **Household Hazardous Waste** can be dropped off free of charge at Tillman Ridge or Stratton Rd Transfer Stations. Items include: paint, motor oil, oil filters, gasoline, fluorescent bulbs, wax, cleaners, soap, pool chemicals, pesticides, insecticides, grout, aerosol cans, antifreeze, adhesives, flea dip, car & appliance batteries, polishes, lubricants, muriatic acid, propane gas cylinders, solvents, thinner, transmission fluid, brake fluid, lighter fluid, fire extinguishers, linseed oil, naval jelly, photo chemicals, etc.
- **Obsolete Electronics** include monitors, televisions, CPUs, laptops, printers, scanners, copiers, fax machines, keyboards, mice, cables, game hardware, UPS units, external drives, modems, phones, pagers, radios, stereos, VCR's, tape players, speakers, small kitchen appliances, power tools, health and beauty appliances. *No microwave ovens or large appliances accepted.*
- **Waste Tires** – Automobile and light truck tires only. Limit 10 per household and a disposal fee is charged.

Not accepted: yard trash, garbage, construction materials, commercial items. Residential materials only.

Construction & Demolition Debris

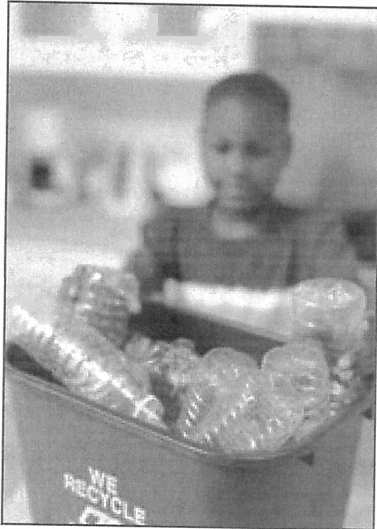
Accepted at Nine Mile C&D Landfill on International Golf Pkwy, (904) 825-2105, or Waste Pro Transfer Station off SR 207, (904) 819-1738.

Waste Cooking Oils

Help our environment and the economy by bringing your waste cooking oils to recycle into biodiesel fuel. Biodiesel is biodegradable, safer for the environment, and costs much less saving taxpayer money on County fleet fuel costs. **Find out how** (</PublicWorks/media/Biodiesel.pdf>) you can help save money and protect our environment! For more information, call (904) 209-0291 or email rinman@sjcfl.us

St. Johns County Government

Recycling



Waste Cooking Oils

The County Biodiesel Program needs your waste cooking oils to recycle into biodiesel fuel. Biodiesel is safer for the environment and costs much less. Grease clogs pipes, causes sewer overflows, and gets into waterways polluting our water. **Find out how**

[\(/PublicWorks/media/Biodiesel.pdf\)](#) you can help save money and protect our environment!

Now Recycling More Items

Cartons are Recyclable! St. Johns County now accepts cartons for recycling! The last drop of milk, juice or soup does not mark the end of a carton's useful life. Simply place empty cartons in your recycling bin with your plastic, metal and glass containers. The recycled paper fibers are a valuable resource for making recycled paper products and building materials.

Items Accepted Include:

- Plastic Bottles and Jugs
(Labeled #1 through #7.)
- Empty Pill Bottles
- Water Bottles
- Green, Brown and Clear Glass Bottles
- Metal and Aluminum Cans
- Cereal Boxes
(With the inserts discarded.)
- Newspapers and Inserts
- Junk Mail
- Juice Boxes
- Magazines
- Cartons
- Catalogs
- Telephone Books
- Brown Paper Bags
- Corrugated Cardboard
(Cut into 2x3 ft. sheets.)
- Office and Copy Paper
- Shredded Paper in a Closed Paper Bag
- File Folders
- File or Packing Boxes
- Brown or Gray Fiber Packages
- Milk Cartons

Place service provider accepted recycling bins curbside by 6a.m. on your scheduled collection day.

Items Not Collected:

- Plastic Bags
- Motor Oil Containers
- Pool Chemical Bottles
- Pesticide Bottles
- Fertilizer Bottles
- Loose Shredded Paper

White Goods

- Refrigerators & Freezers
- Washers & Dryers
- Garbage Disposals
- Stoves & Ranges

- Window Air Conditioners
- Water Heaters
- Trash Compactors
- Microwaves
- Furnaces

Recycle appliances curbside by scheduling a collection with your service provider.

Please Note: **Garbage, recycling and yard debris must be separated by residents for pick up.**

Service Providers

For recycling bins and collection of white goods, please call your service provider.

Advanced Disposal services residents in the southern half of St. Johns County (south of the St. Johns River following CR 208 and south of SR 16 to the ocean). 3530 Agricultural Center Drive, St. Augustine, FL 32092. (904) 827-1005.

Seaboard Waste Systems services residents in the northern half of St. Johns County (north of the St. Johns River following CR 208 and north of SR 16 to the ocean). 445A International Golf Pkwy, St. Augustine, FL 32095. (904) 825-0991.